

## Tetron LG (PTFE)

### PTFE Product Description:

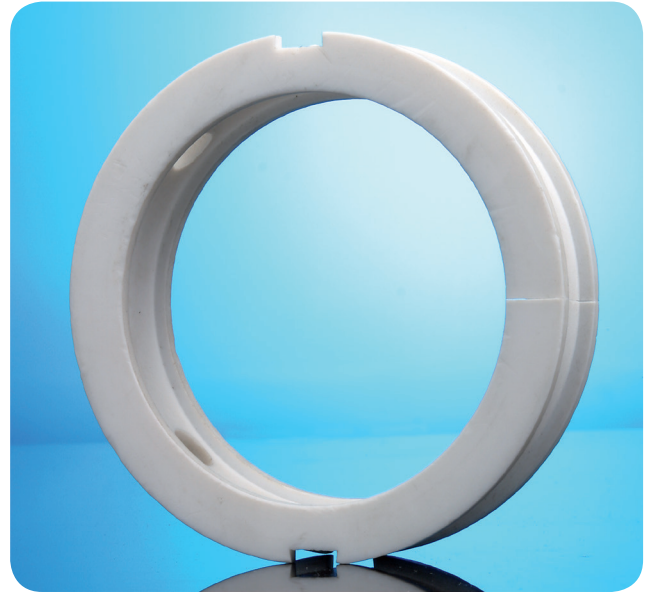
TETRON LG is the trade name for low percentage glass-filled polytetrafluoroethylene (PTFE). Glass fibre is the most commonly used filler, resulting in a lowered deformation under load at both high and low temperatures. Wear and friction behaviour is also improved.

- Avoid use with Hydrofluoric Acid (HF) and strong alkalis
- The glass fibre used is E-glass milled fibre, nominal diameter 13 microns to ensure even dispersion and optimum properties

TETRON LG mouldings have a homogeneous and dense structure. The surface is smooth with a white to light grey appearance.

### PTFE Applications:

- Piston Rings
- Valve Seats
- Shaft Seals
- Electrical Insulators
- Bearing Pads



### PTFE Delivery Program

Off White



#### PTFE Sheet

Thickness: 10 - 40 mm  
Size: 610 x 610 mm



#### PTFE Rod

Diameters 12 - 150 mm



#### PTFE Tube

Outside Diameter 36 - 625 mm

### Physical Properties

Specific Gravity:	g/cm <sup>3</sup>	2.20
Continuous Operating Temperature:	°C	260
Tensile Strength:	Mpa	25
Impact Resistance:	Izod ASTM D296 J/mm <sup>2</sup>	-
Hardness:	Shore D	60
Co-efficient of Thermal Expansion:	mm/(mmxK)x10 <sup>-6</sup>	N/A
Surface Resistivity:	Ohms	N/A
Flammability Flash Point:	°C	530
Elongation:	CD %	280
Co-efficient of Friction: Test Method Polish Steel 23°C	Dynamic	0.11

*This specification provides typical data to the best of our knowledge at the time of publishing. Due to our inability to control conditions of use and application, we are unable to make any recommendations or suggestions. Dotmar EPP PTY assumes no liability for use of information presented herein.*